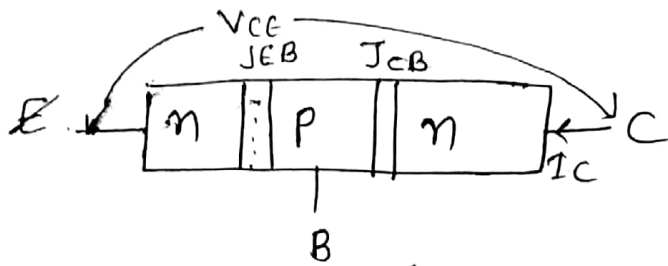
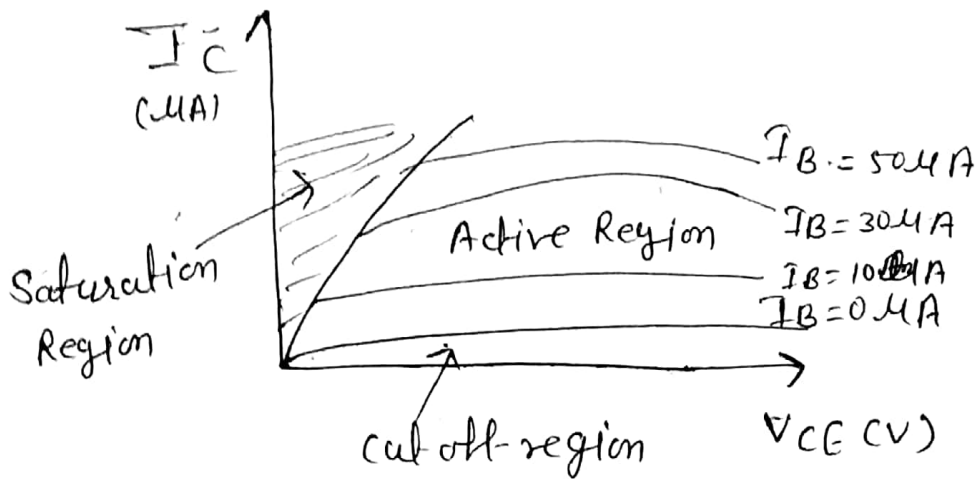


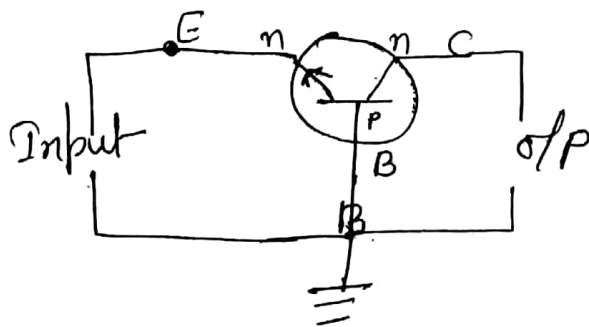
② output characteristics of CE configuration

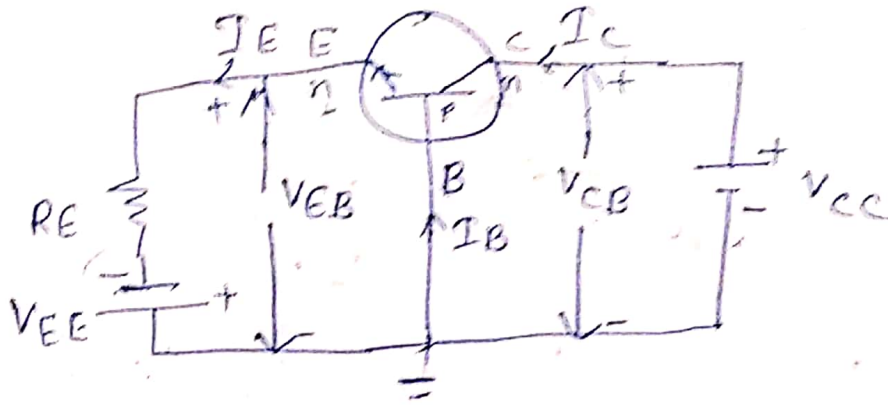


Current Amplification Factor

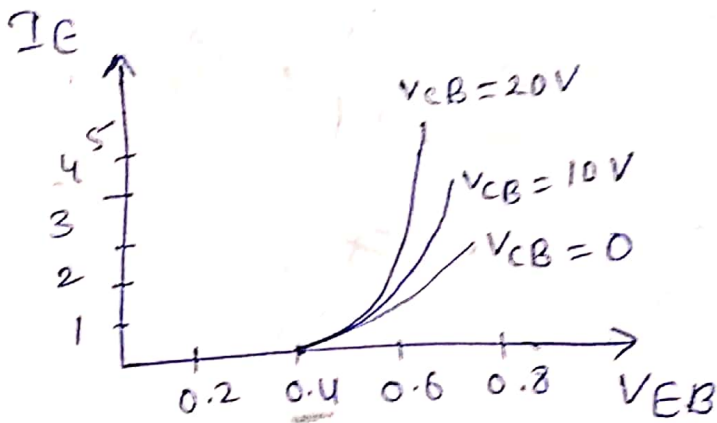
$$\beta = \left. \frac{\Delta I_C}{\Delta I_B} \right|_{V_{CE} \text{ के constant मान पर}}$$

Common base Configuration \Rightarrow

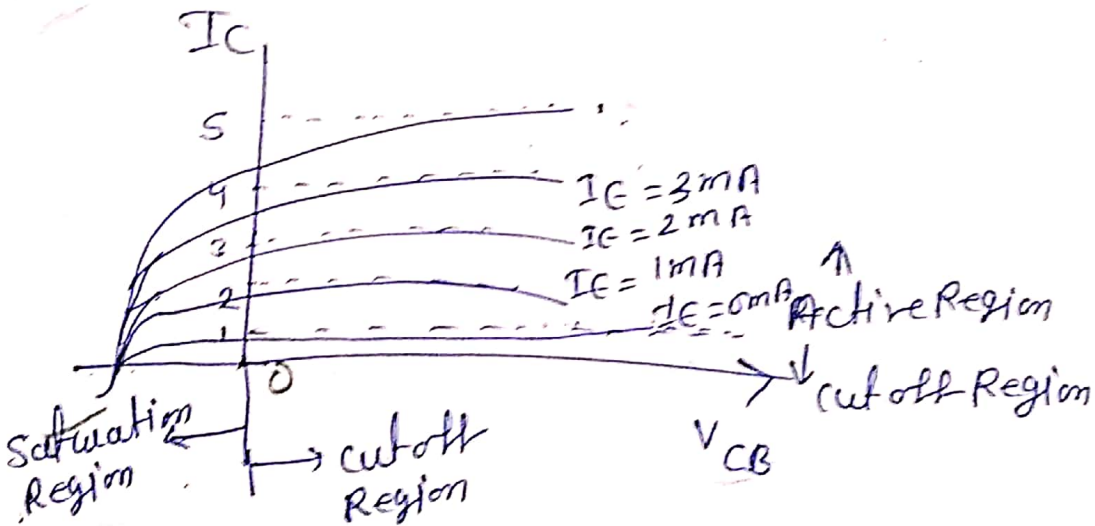




⑦ input characteristics



o/p



Current Amplification factor

$$\alpha = \frac{\Delta I_C}{\Delta I_E}$$